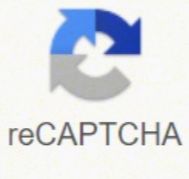




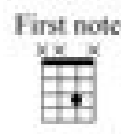
I'm not robot



Open

# Hostage

Words and Music by Billie Eilish O'Connell and Finneas O'Connell



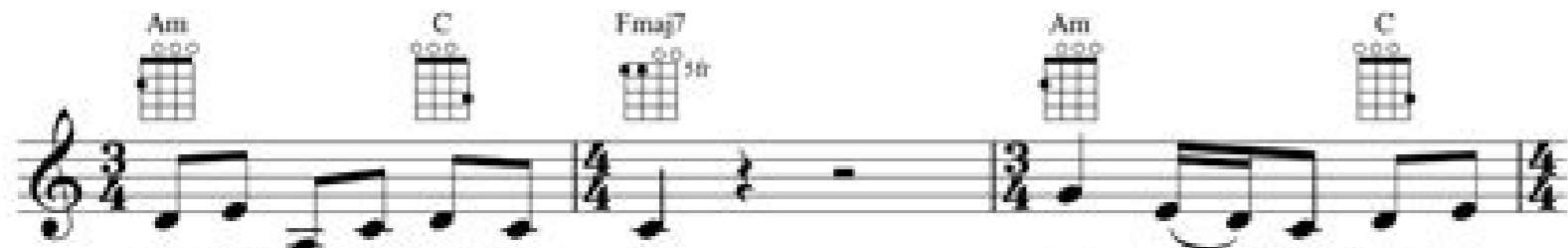
Verse  
Somber



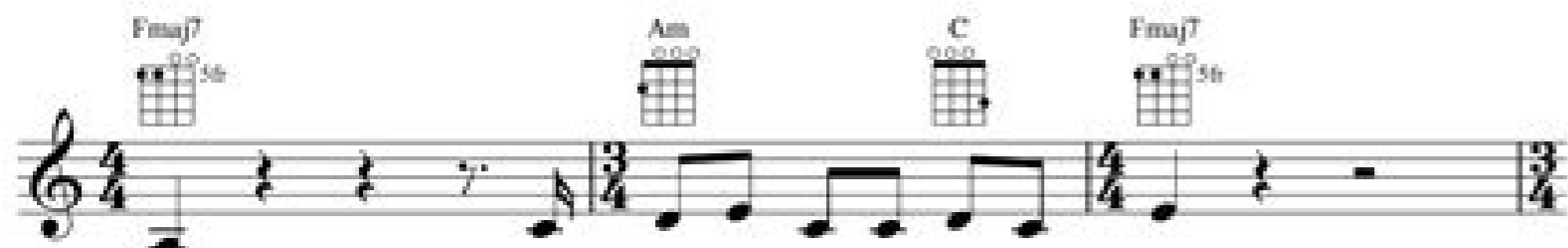
1. I wan - na be a - lone, a - lone with you. Does that make  
2. Gold on \_ your fin-ger - tips, fin - ger - tips a - gainst my



sense? and  
check. Gold leaf - a - cross your soul lips,



hide you in my treas - ure chest. I don't \_ know what to  
kiss me un - til I can't speak. Gold chain - be - neath your



do, to do with your kiss on my neck.  
shirt, the shirt that you let me wear home.

Copyright © 2017 UNIVERSAL MUSIC CORP., DRUP and LAST FRONTIER  
All Rights for DRUP Administered by UNIVERSAL MUSIC CORP.  
All Rights for LAST FRONTIER Administered Worldwide by KOBALT SONGS MUSIC PUBLISHING  
All Rights Reserved Used by Permission

## Everyone Piano



## Everyone Piano

www.EveryonePiano.com



